



Rugged Mobile Computer PT20 / PT25

Portable Innovation Technology
The Power Behind Your Rugged Mobile Computing

Application

If you are looking for a mobile computer that you can collect data for a whole day, your search is over. PT20 / PT25 is the answer to your request. It is just about 275g (normal battery), long battery life (10+ hours operation¹), big screen (3.2" diagonal) and yet comfortably to hold .

The PT20 / PT25 mobile computer is a neat package that packs with functions your customers needed in major industries, namely retail, healthcare, warehouse tracking and logistics. It is rugged (IP64 and 1.5 – 1.2 meters drop), fully connected (Bluetooth, 2.4G WiFi b/g /n , HSDPA / WCDMA / EDGE / GPRS data) and has various options that you can customize for your customers' needs (multiple scan engines and OSs support).



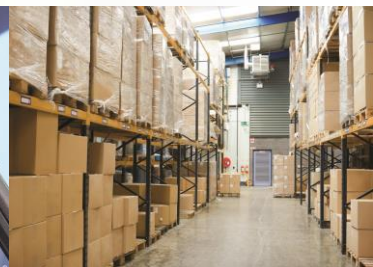
Retail



Healthcare



***Warehouse
tracking***



Logistic

Rugged yet ergonomic



Reinforced polycarbonate structure meets the IP64 protection class and withstands 1.5 (PT20) – 1.2 (PT25) meters drop on concrete multiple times.



Big color display (3.2 color QVGA TFT) and yet comfortably grabbed by users perfect balance.



Perfect balance of weight with normal and 1.5x capacity battery.



Rubber sealing prevents the ingress of dust and water to meet IP64 standard.



Collecting data while stay connected



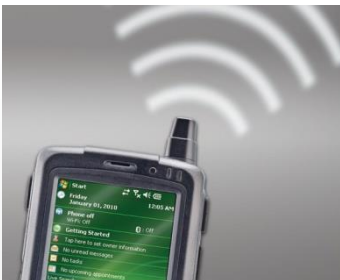
Multiple scanning technology supported.
CMOS Imager, CCD, Laser scanner.



Bluetooth wireless communication for
connecting other Bluetooth enabled
peripherals e.g. mobile printers.



IEEE 802.11b/g /n radio at 2.4G.



PT25 provides WWAN (HSDPA / EDGE /
GPRS data communication only) radio
option enables wide rang of field based
applications



Bottom connector with serial, USB and
power output (+5V) for communication of
external accessories.

Flexible options for your customers



Optional 1D CCD / 1D Laser / 2D CMOS imager to fit customers' needs.



Optional radio options (WLAN, WWAN, MiFARE) to fit customer's needs and budgets.



Multiple OS support for maximum application compatibility: Windows CE5, Windows CE6, Windows Mobile 6.1 / 6.5.



Default numeric or customized keypad according to customers' requirements.



128MB RAM / 128MB Flash (optional 256MB RAM / 256MB Flash) with up to 16G Micro-SD card support.



Bottom connector with serial, USB and power output (+5V) allowing future expansion modules.

PT20 Specifications



Physical

Dimensions:	148 mm(L) x 73 mm(W) x 27.5 mm(D)
Weight:	Standard battery: 254g
Display:	3.2 inch full QVGA (240x320) TFT display with backlight
Touch Panel:	Glass analog resistive touch
Backlight:	LED backlight
Battery:	Rechargeable Lithium Standard: 3.7 V, 1920 mAh Extended: 3.7V, 2880 mAh
Expansion:	Micro-SD slot
Connectivity:	Full speed USB
Warning:	Vibrate and LED
Keyboard:	26-key numeric in English
Audio:	Speaker

Performance Characteristics

CPU:	ARM9 400MHz processor
Operating systems:	Windows CE 6.0 R3, Windows Mobile 6.1 / 6.5, Windows CE 5.0
Memory:	128MB RAM, 128MB Flash (256MB RAM / 256 MB flash option)
Interface:	USB 2.0 Client

User Environment

Operating Temperature:	-10°C to 50°C
Storage Temperature:	-20°C to 60°C (w/o battery)
Humidity:	90% non-condensing
Drop Spec:	1.5 meters drops to concrete per MIL-STD810G
Sealing:	IP64
Clock:	Integrated real time clock
Electrostatic Discharge (ESD) :	± 15 kV (air discharge), ± 8 kV (direct discharge)

Wireless PAN Data

Bluetooth:	Class II EDR 2.0
Antenna:	Internal

Wireless LAN Data

WLAN Radio:	IEEE 802.11 b/g/n (2.4GHz)
Data Rates Supported:	1,2,5.5,6,9,11,12,18,24,36,48 and 54Mbps
Operating Channels:	Channels 1-13 (2412-2472 MHz)
Transmission Power:	30mW (transmit) (line of sight open field test: 300 meters at 1 Mega bits per second)
Security:	WEP (40 or 128 bit), TKIP, AES, WPA2-PSK, WPA-PSK, WPA2 (EAP-TLS, EAP-PEAP)
Antenna:	Internal
Option:	SUMMIT b/g

Data Capture

Barcode:	1D CCD Scanner 1D Laser Scanner 2D Imager Scanner
NFC (Optional):	MIFARE ISO 14443 A

Accessories



Single Slot Dock



Power Adapter



Charging cup kit



Stylus



Hand strap



1.5X 2880mAh
Lithium Polymer Battery
and
1.5X battery cover

PT25 Specifications



Physical

Dimensions:	169 mm(L) x 73 mm(W) x 27.5 mm(D)
Weight:	Standard battery: 254g
Display:	3.2 inch full QVGA (240x320) TFT display with backlight
Touch Panel:	Glass analog resistive touch
Backlight:	LED backlight
Battery:	Rechargeable Lithium Standard: 3.7 V, 1920 mAh Extended: 3.7V, 2880mAh
Expansion:	Micro-SD slot
Connectivity:	Full speed USB
Warning:	Vibrate and LED
Keyboard:	26-key numeric in English
Audio:	Speaker

Performance Characteristics

CPU:	ARM9 400MHz processor
Operating systems:	Windows CE 6.0 R3, Windows Mobile 6.1 / 6.5, Windows CE 5.0
Memory:	128MB RAM, 128MB Flash
Interface:	USB 2.0 Client

User Environment

Operating Temperature:	-10°C to 50°C
Storage Temperature:	-20°C to 60°C (w/o battery)
Humidity:	90% non-condensing
Drop Spec:	1.5 meters drops to concrete per MIL-STD810G
Sealing:	IP64
Clock:	Integrated real time clock
Electrostatic Discharge (ESD) :	± 15 kV (air discharge), ± 8 kV (direct discharge)

Wireless PAN Data

Bluetooth:	Class II EDR 2.0
Antenna:	Internal

Wireless WAN Data

WWAN Radio:	HSDPA/WCDMA/EDGE/GPRS
Frequency:	WCDMA: 900 / 2100MHz WCDMA: 850 / 1900MHz EDGE / GPRS: 850 / 900 / 1800 / 1900MHz
Antenna:	External

GPS (Optional)

Technology:	gpsOne (supports A-GPS and standalone GPS)
Antenna:	Internal

Wireless LAN Data (Optional)

WLAN Radio:	IEEE 802.11 b/g/n
Operating Channels:	Channels 1-13 (2412-2472 MHz)
Security:	WEP (40 or 128 bit), TKIP, AES, WPA2-PSK, WPA-PSK, WPA2 (EAP-TLS, EAP-PEAP)
Antenna:	Internal

Data Capture

Scan engine	1D CCD Scanner 1D Laser Scanner 2D Imager Scanner
--------------------	---

Accessories



Single Slot Dock



Power Adapter



Charging cup kit



Stylus



Hand strap



1.5X 2880mAh
Lithium Polymer Battery
and
1.5X battery cover



Rugged Mobile Computer PT20 / PT25

Portable Innovation Technology
The Power Behind Your Rugged Mobile Computing

Tel: (852) 2310-2830

Email: sales@pitech.com

Address: Unit A, 22/F Kings Tower, 111 King Lam Street, Cheung Sha Wan, Kowloon, Hong Kong SAR