



Rugged Mobile Computer LPT82

Portable Innovation Technology Ltd.
The Power Behind Your Rugged Mobile Computing

Applications

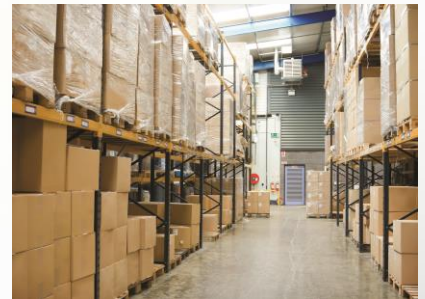
RUGGED, LIGHT, BIG SCREEN, STYLISH, ALL DAY OPERATIONS, seems to be a group of features that cannot be comprised themselves into a single package. Until now, we have answered your requests with LPT82. It is just 305g (with 2880mAh battery), long battery life (10+ hours operation¹), big screen (3.5" diagonal), high resolutions (HVGA resolution) and yet comfortably to hold.

The LPT82 mobile computer is a neat package that packs with functions your customers needed in major industries, namely retail, warehouse tracking, logistic and field services. It is rugged (IP66 and 1.5 meters drop to concrete), fully connected (Bluetooth, Wi-Fi b/g/n, optional WWAN) and has various options that you can customize for your customers' needs.

Retail



Warehouse tracking



Logistic



Field Services

¹ Under room temperature, display ON, Wi-Fi ON and normal operations

Durable

1.5m drops

Reinforced polycarbonate structure withstands 1.5m drops on concrete multiple times across wide range of temperature.

IP66 water sealing

Rubber sealing prevents the ingress of dust and water to meet IP66 standard.



Anti-slip texture

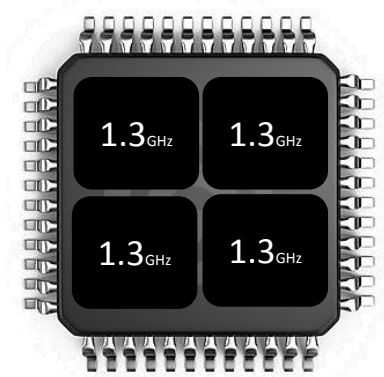
Provides you a better surface grip and reduces the risk of dropping device due to various outdoor working environments.

Strong and light

Titanium aluminum alloy middle frame to provide the strongest and lightest backbone to the electronic components in order to achieve high drop resistance.



Performance.



Quad-core 1.3GHz CPU

Keep your most computational demanding applications running smooth

Multiple scan engines

Pick either laser, CCD or 2D image scan engine to best suite for your applications.



Big color display

3.5" color HVGA (320 x 480) TFT and yet comfortably grabbed by users in perfect balance.

Long battery life

Under room temperature and normal usage, LPT82 can operate 10+ hours. It is perfect to industries requiring 8 hours shift.

10+ hrs



Connect



3.5G Capabilities (Optional)

Faster upload and download capability and yet consumes less battery power than 4G LTE.

Industrial grade Wi-Fi range

300 meters line of sight WiFi connectivity (at bit rate 1M bit / sec)



Integrated GPS

The GPS feature enables your customers' applications to be location sensitive.

Managed. Flexibility. Ergonomic.



User / Admin mode

Tools to allow your IT management to control virtual button access such as Home, Back, Menu as well as limited USB access in LPT82.

Multiple battery charging ports

End user can charge the battery with either standard Micro-USB port built in the device or through cradle.



Modularized keypad design

The keypad and the keypad enclosure is modularized so that it can be customized according to your customers' needs.

Comfortable and stylish

The size of LPT82 is carefully designed so that it can be operated by one hand and yet its curvy back make it comfortable to hold.



LPT82 Specifications



Physical

Dimensions:	198 mm(L) x 75 mm(W) x 19.5 mm(D) (min) 27.8mm (D) (max)
Weight:	Standard battery: 305g
Display:	3.5 inch HVGA (320x480) TFT display with backlight
Touch Panel:	Tempered glass resistive touch
Backlight:	LED backlight
Battery:	Rechargeable Lithium 3.7 V, 2880mAh
Expansion:	MicroSD slot (MicroSDHC support)
Connectivity:	High speed USB
Warning:	Vibrate and LED
Audio:	Speaker

Performance

CPU:	Cortex 1.3 GHz quad –core processor
OS:	Android 4.2.1
Memory:	1GB RAM, 4GB Flash
Interface:	USB 2.0 Client

User Environment

Operating:	-10°C to 50°C
Storage:	-20°C to 60°C (w/o battery)
Humidity:	90% non-condensing
Drop Spec:	1.5 meters drop multiple times on concrete
Sealing:	IP 66
Clock:	Integrated real time clock
ESD :	±15 kV (air discharge), ±8 kV (direct discharge)

Data Capture

Barcode scanning:	1D CCD scan engine 1D laser scan engine 2D imager scan engine
-------------------	---

Wireless WAN Data (Optional)

Radio:	HSDPA / UTMS / EDGE / GPRS
Frequency	HSDPA / UTMS (900 / 2100 MHz)
Band:	EDGE / GPRS (850 / 900 / 1800 / 1900 MHz)
GPS:	GPS/QZSS/SBAS (WAAS/MSAS/EGNOS/GAGAN)

Wireless PAN Data

Bluetooth:	Class II EDR 2.0; internal antenna
------------	------------------------------------

Wireless LAN Data

Radio:	IEEE 802.11 b/g/n (2.4GHz)
Data Rates:	1,2,5.5,6,9,11,12,18,24,36,48, 54Mbps
Channels:	Channels 1-13 (2412-2472 MHz)
Security:	WEP (40 or 128 bit), TKIP, AES, WPA2-PSK, WPA-PSK, WPA2 (EAP-TLS, EAP-PEAP)
Antenna:	Internal

Accessories



Stylus



Power Adapter



Holster



Hand strap



2880mAh Lithium Polymer Battery



Rugged Mobile Computer LPT82

Portable Innovation Technology
The Power Behind Your Rugged Mobile Computing

Tel: (852) 2310-2830

Email: sales@pitech.com

Address: Unit A, 22/F Kings Tower, 111King Lam Street, Cheung Sha Wan, Kowloon, Hong Kong SAR